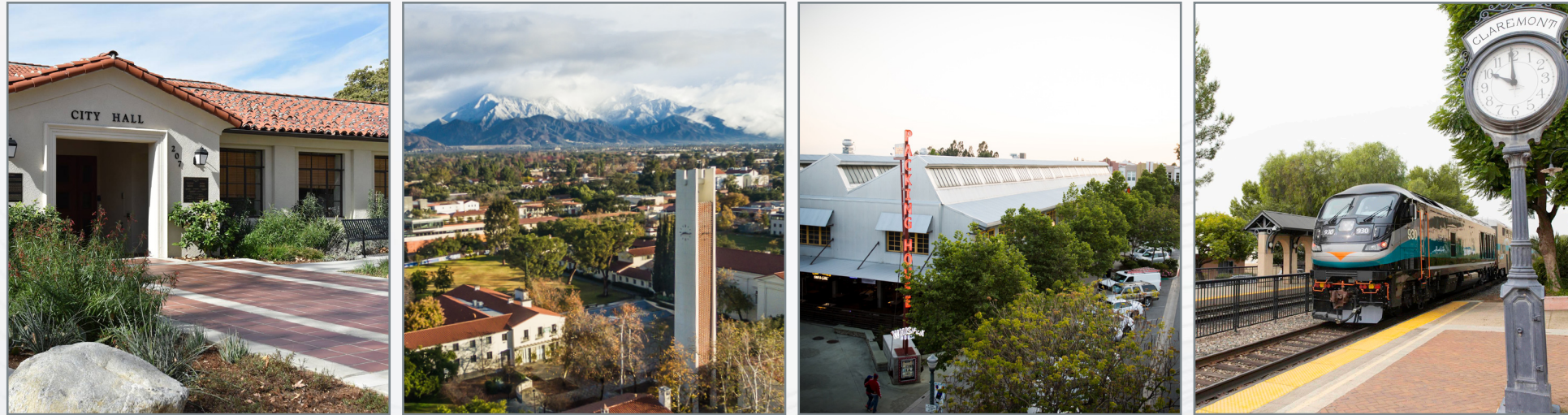


THE CLAREMONT COLLEGES ARE LOCATED IN THE BEAUTIFUL CITY OF CLAREMONT, CALIFORNIA.

Claremont, a suburban city 30 miles east of downtown Los Angeles, is nestled at the base of the foothills of the San Gabriel Mountains. With a population of just 35,000, the quintessential college town of Claremont is known as the City of Trees and PhDs. At its center is the Village, a strollable downtown destination where café tables dot the sidewalks, and shops invite browsing on tree-lined streets. Street festivals, concerts in the park, movie nights and a weekly farmers market contribute to the city's unique and welcoming environment. With the 2,000-acre Claremont Hills Wilderness Park and miles of dedicated trails and bike lanes as well as a Metrolink station in the Village that links riders to many popular Southern California destinations, Claremont is the place to be.



A HIGHLY DISTINCTIVE MODEL OF COLLABORATION IN HIGHER EDUCATION



WWW.CLAREMONT.EDU
 (909) 621-8000 | Communications@Claremont.edu

THE CLAREMONT COLLEGES



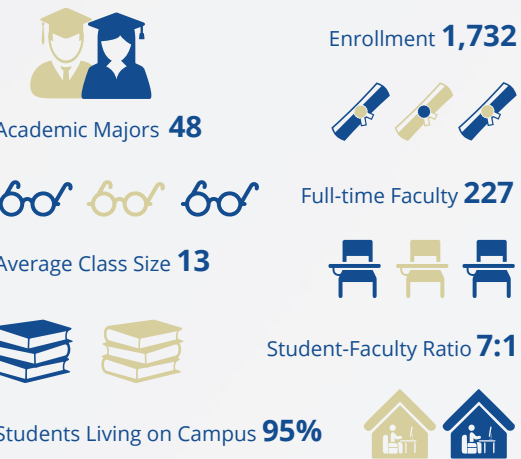
THE CLAREMONT COLLEGES

Students at **The Claremont Colleges** benefit from the diverse missions, character, and culture of the five undergraduate and two graduate institutions as well as the seamless integration of the academic and extracurricular programs that make up this truly unique consortium. This one-of-a-kind higher education community includes over 8,000 students gathered from every corner of the United States and the world, and 3,400 expert faculty and staff who support them in their wide-ranging pursuits.



FOUNDED 1887

Pomona College is widely regarded as one of the world's leading liberal arts colleges, offering an ideal environment for intellectually curious students to pursue their academic goals across 48 majors, with sponsored research and internships as well. Pomona holds a unique role in creating opportunity in American higher education and is committed to enrolling the most qualified students regardless of financial circumstances. To that end, Pomona is one of a small group of colleges that meet 100% of demonstrated need without loans. Our close-knit student body is diverse in background and academic pursuits yet unified by a spirit of collaboration -- and a commitment to sparking real change in our world.

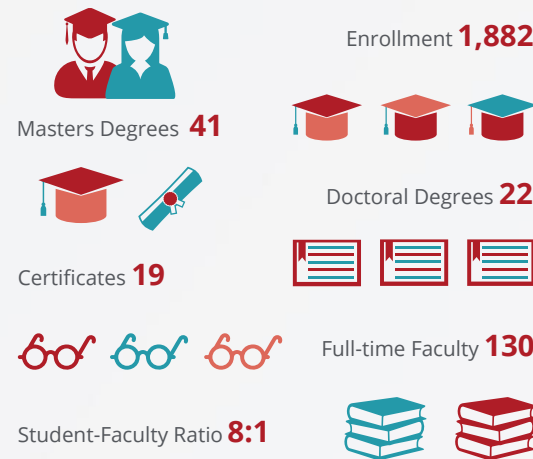


[WWW.POMONA.EDU](http://www.pomona.edu)
Admissions Office: (909) 621-8134
www.pomona.edu/admissions-aid



FOUNDED 1925

Since 1925, Claremont Graduate University (CGU) has offered an intimate, graduate-only environment where students can tailor degree programs to specific interests and career aspirations. Globally recognized faculty provide individual mentorship and practice-based training, preparing students to become leaders of positive change. Through The Claremont Colleges 1-Year Master's Program, undergraduate students from The Claremont Colleges can begin their graduate coursework at CGU during their senior year. This unique opportunity allows students to earn their master's degree in as little as one year.

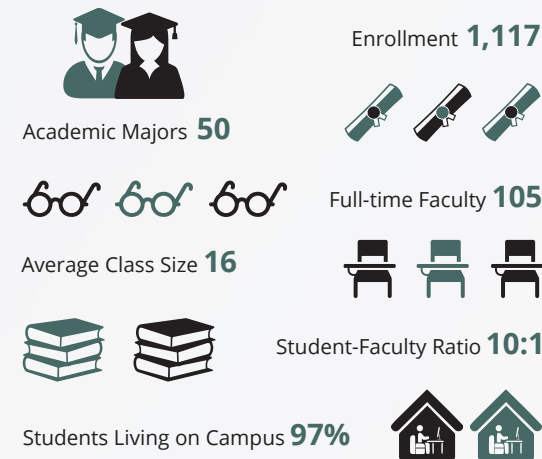


[WWW.CGU.EDU](http://www.cgu.edu)
Admissions Office: (909) 607-7811
www.cgu.edu/admissions



FOUNDED 1926

Scripps College is a top-ranked, private women's liberal arts college, founded in 1926 by newspaper publisher and philanthropist Ellen Browning Scripps. Scripps offers a rigorous interdisciplinary curriculum, a robust intellectual community, a commitment to diversity and inclusion, and a rich residential experience designed to shape the next generation of leaders. Through active student participation in a community of scholars, the College prepares graduates to contribute to society through leadership, service, integrity, and creativity. Top majors include psychology, politics, environmental analysis, biology, and media studies.

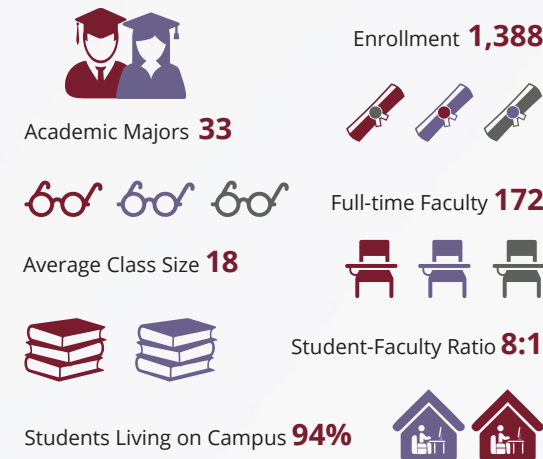


[WWW.SCRIPPSCOLLEGE.EDU](http://www.scrippscollege.edu)
Admission Office: (909) 621-8149
www.scrippscollege.edu/admission



FOUNDED 1946

Claremont McKenna College's mission is to prepare students for thoughtful and productive lives and responsible leadership in business, government, and the professions. CMC is committed to a liberal arts education that emphasizes economics and political science integrated with social sciences, natural sciences, and humanities; contributes to academic vitality and a deeper understanding of public policy issues; provides scholarly support for faculty dedicated to undergraduate teaching; fosters open, critical inquiry through programs that include research institutes and centers and the Athenaeum; sustains a student community where intellectual engagement, civic leadership, recreation, athletics, and career development are essential; and champions freedom of expression, viewpoint diversity, and constructive dialogue through *The Open Academy*, as well as institutional neutrality.

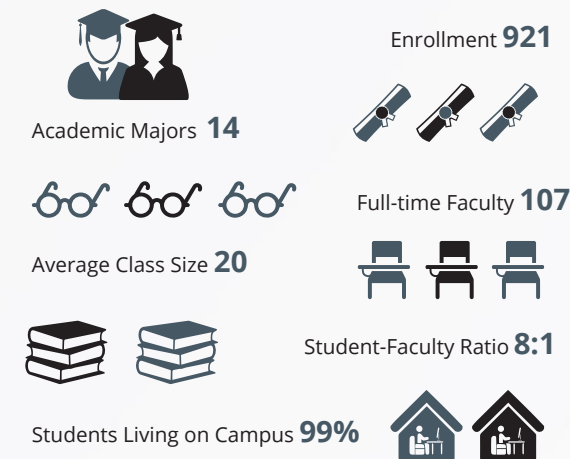


[WWW.CMC.EDU](http://www.cmc.edu)
Admission Office: (909) 621-8088
www.cmc.edu/admission



FOUNDED 1955

Harvey Mudd College (HMC) is one of the premier engineering, science and mathematics colleges in the United States. HMC educates engineers, scientists and mathematicians who become leaders in their fields and have a clear understanding of the impact their work has on society. For more than 70 years, HMC has led the way with interactive undergraduate research opportunities on par with graduate institutions. HMC has a strong focus on the humanities, social sciences and the arts, exceptional faculty members who challenge students to achieve beyond their expectations and one of the nation's highest rates of graduates who go on to earn PhDs in the sciences. HMC's graduates are highly trained scientists, technologists, educators, entrepreneurs and other professionals who are committed to excellence, integrity, inclusivity and innovation.

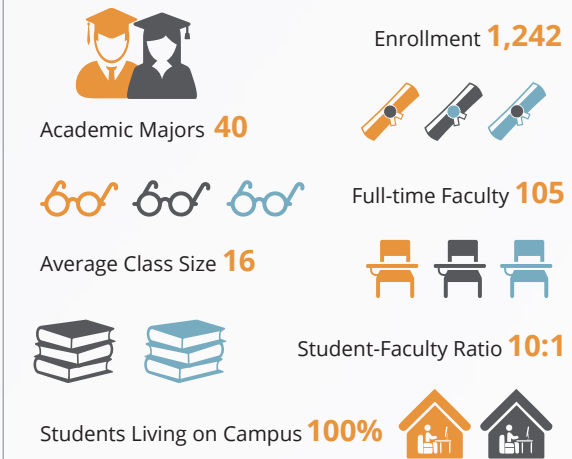


[WWW.HMC.EDU](http://www.hmc.edu)
Admission Office: (909) 621-8011
www.hmc.edu/admission



FOUNDED 1963

Founded in 1963, Pitzer College is a top-ranked liberal arts and sciences college. Pitzer's approach to education is distinguished by five core values: Interdisciplinary Learning, Social Responsibility, Environmental Sustainability, Intercultural Understanding, and Student Engagement. Focused educational objectives and values-driven coursework guide undergraduates as they plan their academic careers as agents of change. Students can work with faculty advisers to create their own special majors, shaping their college experience. They are encouraged to collaborate with community members on local projects and critically examine the effects of social and environmental policies. Since its inception, Pitzer has pioneered fields such as environmental studies and secular studies.

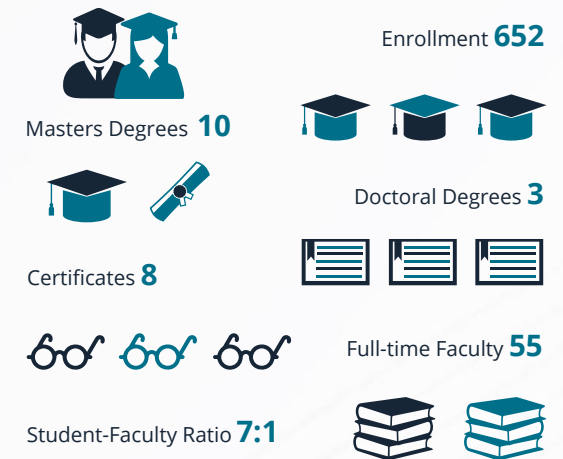


[WWW.PITZER.EDU](http://www.pitzer.edu)
Admission Office: (909) 621-8129
www.pitzer.edu/admission



FOUNDED 1997

Keck Graduate Institute (KGI) offers graduate degrees and certificates in applied life sciences and healthcare to educate the future ethical leaders in biotechnology, healthcare, and research through an inclusive culture, distinctive hands-on education, and interdisciplinary collaboration. Established in 1997, our programs are designed to provide students with specialized and practical knowledge essential for success in today's rapidly changing healthcare and biotech industries. Ranked the #3 Best Masters Program in the U.S. for 2025 by Intelligent.com, graduates of KGI are prepared to transform groundbreaking research and innovation into real-world solutions that will heal and uplift local and global communities. Bring your passion and dream, and we will join you on your journey to find your why at KGI.



[WWW.KGI.EDU](http://www.kgi.edu)
Admissions Office: (909) 819-4KGI
www.kgi.edu/admissions